

IMAGINings!

A Publication of The ImagiNation Network • January 1995

VOL. 3 • NO. 1

Ready, Set, Go!



2.4 is on the way!

Ready for something new in The ImagiNation Network?

Version 2.4 is coming, with *something new all over the map.*

- We're adding the **Arena**, a new spot just for sports and action games. In the Arena, you can play Free-For-All Red Baron and 3-D Golf, as well as other games, such as Front Page Sports: Football, as they become available.

You'll also find a new facemaker created just for the Arena, with more realistic artwork and a wide variety of sports clothing and flight wear to choose from.

- We're opening up the **Little Red Funhouse**, with CyberPlex "edutainment" games and activities that encourage collaborative learning. (See the story in *Imaginings*, October 1994.)

The Funhouse has a new facemaker of its own that allows kids to create bold faces combining animal and human features. Plus there's a trophy case for CyberPlex.

Continued on page 3

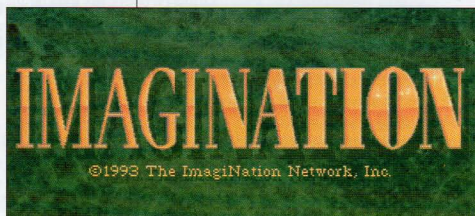
A BRIEF HISTORY OF THE IMAGINATION NETWORK

Well, not that brief, see pages 2&3

▼ March 1990

Three programmers at Sierra On-Line set about creating a multiplayer games network.

The working title is "LarryLand," after the popular "Leisure Suit Larry" game from Sierra On-Line.



January 1991

The project is christened The Sierra Network and is introduced to the public at large, becoming the first computer network dedicated to games.



July 1990

Prototypes are up and running. Two thousand people from the Los Angeles area volunteer to test it.

SIT TIGHT

You don't have to do a thing to get your copy of The ImagiNation Network's Version 2.4, because it will be sent automatically to all of our members via the U.S. Postal Service. You'll find everything you need in the package, including all new documentation and the software on diskette or CD-ROM.

April 1991

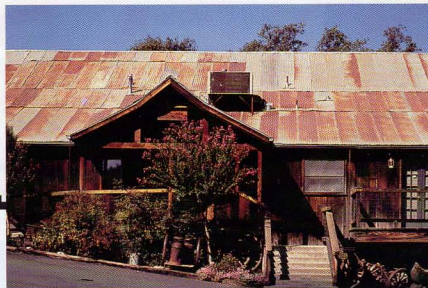
Electronic mail becomes available.

February 1992

More than 7,000 members are online.

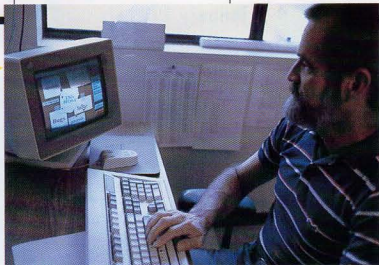
June 1992 ▶

The Sierra Network relocates to a renovated barn in Oakhurst, California, near Yosemite National Park.

**December 1991** ▶

The Sierra Network runs off of six 386/33 computers housed on the second floor of the Sierra Medical Building in Oakhurst, California.

The company employs a total of 17 people, including five Member Services representatives.

**October 1992** ▼

The Map appears for the first time.

Shadows of Yserbius™ and Fates of Twinion™ become available.



kids on line

A Parent's Guide

IF YOU HAVE A PROBLEM

Use these built-in features to make sure your child is safe in The ImagiNation Network.

If another member sends obscene or offensive messages to you or your child, please use the **COMPLAIN** button right away. This will record the exact text of the message and forward it to ImagiNation for further action.

Meanwhile, if you want to discontinue receiving messages from a person who has been sending offensive comments, press the **MUTE** button. When you press **MUTE**, no further chat is allowed from the selected person for the duration of that session.

With the new games and activities for kids available in Version 2.4, parents might have special concerns about how The ImagiNation Network fits into family life.

Ultimately, parents are the best people to ensure a child's safety and comfort while in The ImagiNation Network. While we suggest that parents and children establish their own set of guidelines for ImagiNation, here are some ideas to get you started.

A Advise your children to never, under any circumstances, give out home addresses or telephone numbers while online.

B Remind your child not to respond to messages or bulletin board items that contain obscenities.

C Encourage your child to trust feelings. If an online conversation starts to feel uncomfortable, there's probably a good reason, even if it isn't immediately clear.

D Keep a close watch on your child's activities while online.

E If you or your child ever have questions or need help, feel free to talk with an online ImagiNation staff member, easily recognized by the INN or HOST in front of the person's name.

Make ImagiNation a family activity so that you know as much, if not more, about how ImagiNation works than your child does.

December 1992

300 Beta Testers are online giving feedback on new projects.

August 1993

The Mall is added to The ImagiNation Network.

November 1994

600 Beta Testers are online at The ImagiNation Network.

The ImagiNation Network becomes a wholly-owned subsidiary of AT&T.

July 1993

Sierra On-Line sells equity shares to AT&T and General Atlantic Partners.

The Sierra Network is renamed The ImagiNation Network.

The Network gets new hardware to ensure more reliable service.

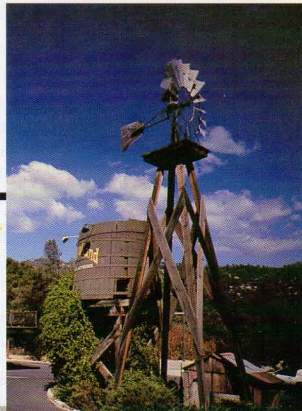
June 1994

The ImagiNation Network relocates its corporate offices to California's Silicon Valley, keeping The Barn for Development and Member Services.

October 1994

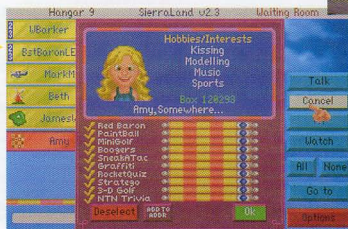
The ImagiNation Network has more than 50,000 members online. The HOSTS program grows, with 60 online HOSTS to greet and guide new members.

The ImagiNation Network employs 300 people, including 55 Member Services representatives, 175 systems operators and HOSTS and 70 people involved in programming, quality assurance, marketing and administration.



1995

Version 2.4 becomes available!



A S K



Fred

HEY FRED:

It's not that I'm a lounge lizard or anything, but I like hanging out in CasinoLand. You know, flirt a little. Gamble some (on the cards and on love, if you get my drift...)

With me, it's all in good fun, so why the changes in CasinoLand? We're all adults, anyway.

- Lucky

Dear Lucky:

Well, actually there have always been rules to uphold community standards in ImagiNation – even in CasinoLand. Yes, I agree it's fun to flirt, but there's a difference between flirting and just saying things that are rude, crude and socially unacceptable. And I'm not a prude, but some of the names had gotten just a little out of hand. So, I guess what I'm hoping is that if we can raise the level of community standards in CasinoLand, it'll be a place where all of us grown-ups can hang out.

HEY FRED:

I know that if I make a long distance call during the day, the phone company charges me more than if I call in the evening. So I'll bet anything that the phone company also charges ImagiNation more when members dial into the Network during the day instead of the evening.

Mostly I go online in the evening to play games and talk with my friends, and I'm tired of subsidizing other members who go online during the day. What is ImagiNation going to do about it?

- CheapKid

Dear CheapKid:

You're right. The ImagiNation Network does have to pay more for phone service when members go online during the day instead of evenings and weekends. I've been told that any future pricing packages will take this into consideration so that everyone pays a *fair* share.

Continued from page 1

- The **Mail Room** will become available from the Arena, SierraLand and CasinoLand, instead of just from the Clubhouse and the Map.
- The Clubhouse gets **Team Bridge**. (See the story in *Imagings*, December 1994.) Plus, we've made upgrades to Hearts and Spades, including the ability to allow someone in the waiting room, when another player takes the place of someone who has left the game.
- SierraLand gets a new dice game called **Yacht**.
- CasinoLand will add **INNtroductions**, a place where members can post "personals" advertisements to find game partners or romantic interests.

All ImagiNation members, new and old alike, will receive welcome kits with all new documentation for The ImagiNation Network Version 2.4.

Got a question for Fred, your "In the Know" guy in The ImagiNation Network? Write to Fred in care of Imagings at E-Mail Box 915 or 577 Airport Blvd., Suite 300, Burlingame, CA 94010.

POSTINGS!

There's something for everyone on The ImagiNation Network bulletin boards. But if you don't see everything you're looking for, send your ideas for new bulletin boards to Box 937 or post them in the "Private Notes to the Host" bulletin board found in all rooms of the Clubhouse.

BULLETIN BOARDS**ALL CLUBHOUSE ROOMS**

Info from ImagiNation
Private Notes to the INN Host

BACKGAMMON DEN

Backgammon League
BG Announcements and Rules
BG League Standings
BG Strategy
Brain Teasers
General Discussion
Hobbies and Crafts
INN BG Tournaments
The Arts

BRIDGE CLUB

Bridge Club Activities
Bridge World Standard
Conventions and Treatments
General Discussion
How Do You Bid This Hand
Kantar's Corner
Partnership Desk
Post Tourney Results Here
Tournament Info and Winners
Tourney and Lesson Sign-ups

BRIDGE PARLOR

ACBL Standard Game Card
Bidding Panel
Bridge Club Activities
General Discussion
Ladder Game Results
Ladder Rounds
Ladder Standings
Partnership Desk
Sheinwold on Bridge

CARD CRIB

Anime
Arcade Games
Comic Books
Computer Games
Crib Challenges
Cribbage Ladder Board
Home Video Games
Science Fiction
Sierra Games

CHESS CLUB

Chess Chat
Chess Club Administration
Chess Tournaments
Chess Workshop
Great Chess Games
Ladder Rounds
Players List and Standings
Read Me First
Special Events

EUCHREVILLE

Euchre Ladder
Euchre Tournaments
On-Line Ethics
Poetry
Writers' Circle

FLIP N CHECKERS

Add-A-Comment Corner
BlackJack League
Checkers League
INN Checkers Tournaments
Poker League
Serious Add-A-Chapter

GO MAGES DEN

General Discussion
GO General
GO Players List
GO Rules
GO Tournaments
Misc. Trading Card Games
MTG General
MTG 1-Game Ladder
MTG 3-Game Ladder

HEARTS CLUB

Disability Issues
Gardening
Genealogy Explorers
Hearts Strategy
Music
Recipes
Teachers' Forum
Travel

INN HELP ROOM

General Interest
INN Bulletin Board List
INN Member Get-Togethers
INN Special Events
Member to Member
Prodigy Game Point
Quotations
Suggestions
Write for Tech Support

INN UNIVERSITY

Ask A Professor
Campus Issues
Class Sign-ups
General Discussion
Schedule of Classes
Self-Help Discussion
Suggestions for Classes
University Announcements

MARRIED LIFE

Family Values
Making Marriage Work
Palace Wit and Humor
Parenting
Prayer Requests
Rhyme and Rhetoric
Soap Operas
Twelve-Step Programs

MYSTIC PORTAL

Astrology
Clairvoyance
Dreams and Interpretations
General Discussion
Hauntings
Marital Arts Discussion
Mythology
Parapsychology
Sightings
Spiritualism

PILOTS LOUNGE

Air Tactics
Flight Sims
General Discussion
INN Tournaments
Ladder Tournaments
Pilots and Squads Wanted
Pilots Proving Grounds
Sky Wars Tournaments

RPG ZONE

Electronic RPGs
Fantasy RPGs
GM-Players Forum
Misc. RPGs
Multi-Genre RPGs

New Card Ideas

SciFi RPGs
Star Trek

SINGLES CLUB

Books
Classic Rock
Debates
Life in the 90s
Movies
Single Parents
Stratego Strategy
Television

TECH TOWER

Computer Audio
Computer Ethics
Electronics
Hardware
Programmers' Forum
Science
Software
TechNotes

TEEN HANGOUT

Friend-to-Friend
General Discussion

SINGLES DEUX

Current Events
Environmental Issues
Ethics
Philosophy
Politics
Religion

SINGLES SPOT

Breaking Up
General Discussion
Meeting People in the 90s
Romance
Singles
String Along Story Spot

SPADES PLACE

Card Games
Cars and Cycles
General Discussion
Investments
Pets
Spades Strategy

SPADES TOO

Collectibles
General Discussion
Ham Radio
Jam Session
One-Game Ladder
The Dating Game
Three-Game Ladder

SPORTS DEN

Baseball
Basketball
Fantasy Sports League
Football
General Sports
Hockey
Paladins MLand Tourney Info
Soccer
Twinion Strategy
Yserbius Strategy

Gobbledygook
Heavy Metal Music
Progressive Rock Music
Rap Music

TEEN SCENE

Advice
Animation
Animation Comments
General Discussion
Poetry
Teen Hangout

TOURNAMENTS

3-D Golf Tournament
Boogers Tournament
Cribbage Tournament
FlipFlop Tournament
Hearts Trny Rules/Matches
Hearts Trny Sign-ups/Results
INN Spades Tournament
MiniGolf Tournament
Poker Tournament
SneakATac Tournament
Stratego Tournament
Tourney Info and Champions

TRIVIA HAVEN

INN Shorthand <ROFL>
Lemmings Leap
Name That Oldie
NTN Chat
NTN Trivia Info
Tangled Trivots
Trivia
Trivia Game Schedule and Rules
Trivia Scores & Announcements
Triviot Games

SUNDAY MONDAY TUESDAY WEDNESDAY THURSDAY FRIDAY SATURDAY

Cartoons & Comics	5 p.m. Uncanny Xmen Fan Club CARD CLUB (Feron 79108)		9 p.m. X-Men and More SPADES PLACE (TimV 93440)				
------------------------------	--	--	---	--	--	--	--

Computers & Games	10 a.m. On Computers TECH TOWER (Taven+ 82551) 7 p.m. Dead Programmers CARD CLUB (CEMAN 96508) Virtual Reality SIG TECH TOWER (REALITY 80456)	!!!!HELP!!! New to ImagNation? Saturdays and Sundays from 10 a.m. to 5 p.m. Pacific time, get the information you need to navigate the world of ImagNation. These special classes for new members start at the top of each hour in the HELP ROOM .	6 p.m. Simulations HELP ROOM (1st & 3rd Tuesdays only) (ChrisTin 134811)	5 p.m. Programmers Palace SPORTS DEN (Zack 47973) 6 p.m. DOOMsters TEEN SCENE (KillerCow 74535) Computer Gaming Club TEEN HANGOUT (Arcane 118133) 7 p.m. PC Flight Simulators CHESS CLUB (Avalance 30559)	5 p.m. NBA Jam SPORTS DEN (NBAMWhley 107276) 7 p.m. OS/2 Users Group SPADES TOO (FrankW+ 21493) 8 p.m. X-Com/INN Base TECH TOWER (WWTriax 77374)	5 p.m. BBS Stuff and Info TECH TOWER (EnichR 45840) 6 p.m. VGPA CARD CLUB (LCCIR 37788)	10 a.m. Beginning BBSing TECH TOWER (Eben+ 58848) 5 p.m. DOOM Players Club CHESS CLUB (Master 121514)
------------------------------	--	--	---	---	--	--	---

Games & Strategies	5 p.m. TTG Trivia TRIVIA HAVEN 7 p.m. TTG Trivia TRIVIA HAVEN 8 p.m. TTG Trivia TRIVIA HAVEN	6 p.m. TTG Trivia TRIVIA HAVEN Bridge Clinic BRIDGE CLUB (BridgOr+ 83491) 7 p.m. TTG Trivia TRIVIA HAVEN 8 p.m. Blue Monday Trivia TRIVIA HAVEN (NickChris+ 23850)	5 p.m. PBP Team Conference SINGLES DELUX (PBPkicker 83713) 6 p.m. TTG Trivia TRIVIA HAVEN 7 p.m. TTG Word Play TRIVIA HAVEN 8 p.m. TTG Trivia TRIVIA HAVEN 9 p.m. TTG Trivia TRIVIA HAVEN	7 p.m. TTG Trivia TRIVIA HAVEN 8 p.m. TTG Trivia TRIVIA HAVEN	6 p.m. TTG Trivia TRIVIA HAVEN 7 p.m. TTG Trivia TRIVIA HAVEN Chess Club Business CHESS CLUB (NNMichaeh+ 997) 8 p.m. TTG Trivia TRIVIA HAVEN	6 p.m. TTG Trivia TRIVIA HAVEN PaintBall Talk SINGLES CLUB (Matt 62506) 7 p.m. TTG Trivia TRIVIA HAVEN FF2 Game Club SPADES PLACE (RichG 79924) 8 p.m. TTG Trivia TRIVIA HAVEN	11 a.m. Go Club EUCHE II (Xeon5kyu 38502) 7 p.m. TTG Trivia TRIVIA HAVEN 8 p.m. TTG Trivia TRIVIA HAVEN 9 p.m. Moo Cows Anonymous Trivia TRIVIA HAVEN 10 p.m. TTG Trivia TRIVIA HAVEN
-------------------------------	---	--	---	--	---	---	--

INN University	11 a.m. Internet INN UNIVERSITY Box 727 1 p.m. Cribbage INN UNIVERSITY Drop In Twinion INN UNIVERSITY Drop In 4 p.m. Movie Review INN UNIVERSITY Drop In 5 p.m. Red Baron INN UNIVERSITY Drop In Hearts INN UNIVERSITY Drop In 6 p.m. CoreDraw INN UNIVERSITY Box 715 Creating DOOM Wads INN UNIVERSITY Box 734	6 p.m. OS2 INN UNIVERSITY Box 704 Euchre INN UNIVERSITY Drop In VISUAL BASIC INN UNIVERSITY Box 764 6:30 p.m. Hearts Box 764 7:30 p.m. Parenting INN UNIVERSITY Box 767 Word for Words INN UNIVERSITY Box 772	6 p.m. RPG INN UNIVERSITY Box 781 Math Workshop INN UNIVERSITY Drop In 6:30 p.m. Cooking for 2 with Style INN UNIVERSITY Box 793 Go INN UNIVERSITY Drop In 7:30 p.m. Internet INN UNIVERSITY Box 727 Game Review INN UNIVERSITY Drop In	6 p.m. Quicken INN UNIVERSITY Box 735 Backgammon INN UNIVERSITY Drop In 6:30 p.m. Paradox for Windows INN UNIVERSITY Box 722 Spades INN UNIVERSITY Drop In 7:30 p.m. Excel INN UNIVERSITY Box 754 Recipe Exchange INN UNIVERSITY Drop In Chess INN UNIVERSITY Drop In	6 p.m. Beginning ASM INN UNIVERSITY Box 764 Math Workshop INN UNIVERSITY Drop In 6:30 p.m. Workshop for the Mind INN UNIVERSITY Box 745 Windows Applications INN UNIVERSITY Box 715 7:30 a.m. Obscis INN UNIVERSITY Box 726 Genealogy INN UNIVERSITY Box 767 8 p.m. Red Baron INN UNIVERSITY Drop In 8:30 p.m. Cribbage INN UNIVERSITY Drop In	6 p.m. Home Budgeting INN UNIVERSITY Box 704 Starting BBS Box 708 7 p.m. CasinoLand INN UNIVERSITY Drop In	10 a.m. Newcomers Class INN UNIVERSITY Drop In 11 a.m. Backgammon INN UNIVERSITY Drop In Noon Serbus INN UNIVERSITY Drop In 2 p.m. Accounting Help INN UNIVERSITY Drop In 3 p.m. Photography INN UNIVERSITY Box 745 4 p.m. Euchre INN UNIVERSITY Drop In 5 p.m. Spades INN UNIVERSITY Drop In 6 p.m. Upgrading Your PC INN UNIVERSITY Box 726 7 p.m. 3-D Golf INN UNIVERSITY Drop In
-----------------------	---	--	---	---	--	--	--

KIDS!
Need a little help with your homework?
Our homework hotline is now available
FOUR DAYS A WEEK,
Mon. - Thurs.,
from 4-8 p.m. Pacific
time at INN University.

MedievalLand Guilds <i>Continued on page 6</i>	1 p.m. Peladine HELP ROOM (1st & 3rd Sundays only) (Advenger 67446) 3 p.m. KOY: Dragon Court EUCHEVILLE (MajicWoid 69330) 5 p.m. SCA Clan Nebaud SPADES PLACE (Timoth 70395) WE01 Guild EUCHE II (Triver 76793) SDF:FF Guild SINGLES DELUX (Zaliona+ 100636) Falcon Guild BACKGAMMON DEN (PaincAC 105437) Heroes for Hire Guild TECH TOWER (Marty 100075)	6 p.m. Amber Guild EUCHE II (Dworkin+ 14288) Excalibur Guild SINGLES DELUX (Dorlan+ 31309) Hot MYSTIC PORTAL (LordsJolan+ 15592(Term+)) GOT: Fear Forest SPADES TOO (Serenity 36114) 7 p.m. LOS Guild Meeting SINGLES DELUX (BeeWuII 100935) MedievalLand Sysop SPORTS DEN (4th Mondays only) (INN.Lani)	5 p.m. Immageddon Guild EUCHE II (Dash 83606) 6 p.m. GOT: High Council TECH TOWER (FisHnik 91003) KOY Sword Swamp EUCHE II (Tolland 81900) HOT Guild TECH TOWER (Darius 91022) 6 p.m. <i>Continued</i> SDF-SS EUCHE II (Sweetie 105798) KOY Sword Swamp EUCHE II (TOLLAND 81900) The Pandion Order GO MAGES DEN (Queen Ehlana 150016)	4 p.m. Dragons GO MAGES DEN (DarkWolf 123273) 6 p.m. ROC Guild HELP ROOM (S/Medic 64789) EOG Guild Jamboree SPADES PLACE (Caroloro 127888) FFB Guild MYSTIC PORTAL (LordPat 105338) KOR Guild MYSTIC PORTAL (CaptainM 102485) SDF:MM Guild TECH TOWER (Epic 85475) SDF:VR Guild CARD CLUB (Rainstar 98862)	6 p.m. GOT: Lance Lair GO MAGES DEN (AJAX 108064) GOT: RR GO MAGES DEN (Mehedio 107023) GOT: Getting to Know Us MARRIED LIFE (Dragon 91075) GOT: ROLEPLAY CAFE 2 CHESS CLUB (Cryplo 114083) KW: Fear Forest SINGLES DELUX (Drynzy 130651) KOY: Roleplay Inn RPG ZONE (Box 64650) SDF:Questmasters MYSTIC PORTAL (SAGA 67355) GOT: ST Host Mtg MYSTIC PORTAL (Radloman 129968)	4 p.m. Guild of the Golden Arrow BACKGAMMON DEN (AdamN 129206) 6 p.m. ADD Guild MYSTIC PORTAL (Lancelot 116787) Champions of Justice SPADES TOO (Solaris 127288) 7 p.m. SDF: CA EUCHE II (Dark 97692) PSCT Guild MARRIED LIFE (Zhang 150866) Dragon Princess Guild GO SIERRA2 (Garion 121658)	9 a.m. Last Legions Guild SINGLES SPOT (Ironwoll 14367) HOT SPADES PLACE (RangerCAI 39802) 3 p.m. YR Guild MARRIED LIFE (Orin 94701) 4 p.m. KOY Volcano Ridge MARRIED LIFE (Barbus+ 61339) 5 p.m. Companions Guild BACKGAMMON DEN (Hasan 71900) Defending Angels Guild SINGLES DELUX (Nivane 102115)
--	--	--	---	---	---	---	---

	SUNDAY	MONDAY	TUESDAY	WEDNESDAY	THURSDAY	FRIDAY	SATURDAY
MedievalLand Guilds <i>Continued from page 5</i>	6 p.m. LLOA Guild CHESS CLUB (Jacques 58793) GOT: TP/FOT GO SIERRA2 (Thanatos 117569) Red Dragon Inn Org CHESS CLUB (MILORD+ 854669) POY HEARTS CLUB (Oak 80736) GOT: TP/FOT GO MAGES DEN (Thanatos 117569) 7 p.m. Silver Chalice HELP ROOM (2nd & 4th Sundays only) (AlatorGM 33826) Empire Guild HELP ROOM (4th Sunday only) (Trent 24513) KOS Guild MYSTIC PORTAL (Krandor 86634) League Of Veldare SPADES TOO (Snick 82278) NOR High Council SINGLES DEUX (Lelo 92464) LLOA Meeting Hall GO MAGES DEN (Lytbor 98948) 8 p.m. Heroes Unlimited CHESS CLUB (Alarik 67615)	7 p.m. <i>Continued</i> SPRI Spang SPORTS DEN (1st & 3rd Mondays only) (INNISUE) WFIC TECH TOWER (Rick/WIRC 84542) SO/DA Guild EUCHE II (Yugloc2 67832) SOF RC CARD CLUB (int+ 88169) VEA Guild EUCHE II (Sabre+ 70464) 8 p.m. Adventures of Yserbius SPORTS DEN (Daniels T16472)	7 p.m. SO/ Guild CARD CLUB (Matt+ 41308) DROW Guild TECH TOWER (Saradon 150528) MAKOS Guild MYSTIC PORTAL (HYDRO+ 92726) Mod Guild MYSTIC PORTAL (Hawkguard 129192)	6 p.m. <i>Continued</i> GOT: Evil Way SPADES TOO (Wolter 96024) GOT: Sword Swamp HEARTS CLUB (Printus 91925) GOT: Chameleon Arena EUCHEVILLE (Raventine 128036) 6:30 p.m. GOS Guild TECH TOWER (Tabilia 102630) 7 p.m. Camelot Guild HELP ROOM (2nd & 4th Wednesdays only) (Morotro+ 14169) CABAL Guild PILOTS LOUNGE (Raven 49146) Deads Guild MYSTIC PORTAL (SKRILL 102841) Crown of KOY Guild RPG ZONE (Pug+ 65980) Protectors of Yserbius MYSTIC PORTAL (Kharolis 102683) Turion Destroyers Guild CHESS CLUB (Duplicator+ 73050) FUN Guild SINGLES DEUX (Crys 88364) 8 p.m. Air Warriors Squad SPADES PLACE (AWAceCO 71613)	6 p.m. <i>Continued</i> COV/RM Meeting SPORTS DEN (DukeLelo 112546) 7 p.m. TSOY Guild Masters EUCHEVILLE (Kestrel+ 24571) KORS Guild HELP ROOM (2nd & 4th Thursdays only) (Aphroditte 84224) KOY: EUCHE II (Dani 81829) SDF: Raptor Reach SINGLES DEUX (SirJorge 83803) SOF Guild SINGLES DEUX (VanHelsing 72797)	6 p.m. <i>Continued</i> WYS Guild EUCHE II (AVARICE 107388) WolfGang Guild MYSTIC PORTAL (SirWoi 60025) 9 p.m. Darkbane Guild SPORTS DEN (Roline 68279)	8 p.m. WYS Guild EUCHE II (AVARICE 107388) WofGang Guild MYSTIC PORTAL (SirWoi 60025) 9 p.m. SDF Lance Lair MYSTIC PORTAL (Paladin 89124) Aces Guild RPG ZONE (Thomas+ 102263) Last Legion Reunite MARRIED LIFE (Ironwolf 14367) GOK Council of Krynn CHESS CLUB (Huma 132403) SDF Lance Lair MYSTIC PORTAL (Jalea 88492) 8 p.m. Soldiers of Fortune TECH TOWER (Iet 68168) Underwater Help Room (1st & 3rd Saturdays only) (Lurker+ 20068) Shapeshifter Guild HELP ROOM (1st & 3rd Saturdays only) (Algeron 62338) Shadow Horde Guild TEEN HANGOUT (Slash 22569) Champions of Justice PILOTS LOUNGE (Solaris 127288) Dark Hawk Campaign BACKGAMMON DEN (DMKruzer 69307)

What's a Conference?

A conference is like listening in on a party line – but it's OK to drop in with a comment when you like. In conferences, people with similar interests share their ideas about a favorite subject – anything from games to TV shows to dating tips.

Let the Games Begin

As the ImagiNation Network has grown, the number of online tournaments and clubs has skyrocketed.

It's simple to register your tournament or club: write to the Club Registry at E-Mail Box 699, or drop us a line at *Imaginings*, 577 Airport Blvd., Suite 300, Burlingame, CA 94010.

Music

!!!HELP!!!

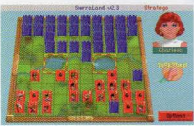
10 a.m. to 5 p.m.
Saturdays and Sundays . get the information you need to navigate the world of ImagiNation
Classes start at the top of each hour in the **HELP ROOM**.

8 p.m.
Courtney Love Fan Club
TEEN SCENE
(CourtneyL 96414)

8 p.m.
Piano Club
TOURNAMENTS
(Beethoven 102686)

5 p.m.
They Might Be Giants
EUCHEVILLE
(MisalLoaf 12937)
Pearl Jamers
HEARTS CLUB
(PLUTO 126074)

7 p.m.
Guitar Club
EUCHE II
(KCobain 33101)



Noon
Lead Zap Fan Club
SINGLES DEUX
(Sldur 10911)

7 p.m.
MV/VH1 Talk
HEARTS CLUB

Political & Social Issues

7 p.m.
Commonwealth Club
HELP ROOM
(1st & 3rd Sundays only)
(Chinook+ 114758)

7 p.m.
DitEaux Institute
SINGLES DEUX
(Bianca 69065)

6 p.m.
Republican Forum
SPORTS DEN
(JoshM 122220)

6 p.m.
Republican Forum
SPORTS DEN
(JoshM 122220)

10 a.m.
Anarchist's Underground
CARD CLUB
(BlackJack+ 76909)

6 p.m.
HIV/AIDS Info Conference
SINGLES CLUB
(dartenem+ 22991)

Red Baron Squadrons
Continued on page 7

3 p.m.
OH Squadron Operations
PILOTS LOUNGE
(GHDardOne 21593)

4 p.m.
Wing Walker Squad
PILOTS LOUNGE
(WWBlaeMax+ 18340)

5 p.m.
Hell's Bandits Squad
CARD CLUB
(HBMagnum+ 81551)
Holy Air Force
TEEN SCENE
(HAFabiles 89367)
KO Squadrons
PILOTS LOUNGE
(KOGuido 116904)
Flying Warlords Squad
HEARTS CLUB
(FWSnake 75829)

6 p.m.
Sky Wars
PILOTS LOUNGE
(SkyGrupWM 86135)

5 p.m.
Joining Luftwaffe
PILOTS LOUNGE
(LWCurt 71140)

7 p.m.
Aerial Atrocity Squad
HELP ROOM
(2nd & 4th Mondays only)
(ScizaA 18954)

8 p.m.
Blue Knights Squadron
PILOTS LOUNGE
(BKMalice+ 22916)

4 p.m.
DeathCrushers Squad
PILOTS LOUNGE
(DCMands 55228)

5 p.m.
RC Squadron
EUCHE II
(RCkaiser 83440)

6 p.m.
HA-Squadron Briefing
PILOTS LOUNGE
(PsyHA 147035)

7 p.m.
WFT Squadron
PILOTS LOUNGE
(WFLJanet 12515)
Colorblind Dogfighters Squad
PILOTS LOUNGE
(CD Merlin 14572)

6 p.m.
Rolling Thunder Squad
HEARTS CLUB
(RTWashout 60859)

Viper Squadron
CARD CLUB
(VSDylan 111115)
Sky Hunters
PILOTS LOUNGE
(SHRattler 14497)

7 p.m.
Lethal Xcutators Squad
PILOTS LOUNGE
(LXMichal 104114)

8 p.m.
Flying Circus Squad
PILOTS LOUNGE
(FCSev+ 16785, FC9Lurker+)

5 p.m.
Flying Police Squad
EUCHE II
(FASAsfer 35280)

7 p.m.
Death Crusaders
PILOTS LOUNGE
(DCJassica 73432)

Holy Angels Squadron
PILOTS LOUNGE
(HAAngle 125095)
Secret Order's Meet
HEARTS CLUB
(EmperoS0 147782 SQUAD)

5 p.m.
Force Ten
PILOTS LOUNGE
(AssaultF10 47087)
Black Widows Squad
PILOTS LOUNGE
(BWAce 120513)

6 p.m.
Black Dragon Squad
PILOTS LOUNGE
(Sniper 95018)
Lafayette Escadrille Squad
PILOTS LOUNGE
(HerolE+ 71625)

7 p.m.
Red Knights Squad
CARD CLUB
(RKFokker 56134)
EgoSquad Meeting
BACKGAMMON DEN
(EgoMuncher 47646)
LB Squadron
GO SIERRA2
(CourgarLB 140255)

9 a.m.
Hawk's Talon Squad
CHESS CLUB
(HTSLeath 70654)

10 a.m.
Killer Serpents
EUCHEVILLE
(KSCobra 38563)

3 p.m.
XWSquad Meeting
PILOTS LOUNGE
(XWLuke 79664)

5 p.m.
Desert Fighters Squad
SPADES TOO
(Justin 3346)

RC Briefing Room
PILOTS LOUNGE
(RCBizzard 22502)

5 p.m.
Heils Aces
AERODROME
(PsyHA 147035)

SUNDAY MONDAY TUESDAY WEDNESDAY THURSDAY FRIDAY SATURDAY

Red Baron Squadrons
 6 p.m. *Continued*
Blue Knights Squad Training
 EUCHRE II
 (BfNavesjo 148436)
Les Cigognes Squad
 INN HELP ROOM
 (2nd & 4th Sundays only)
 (LCJm 22806)
 8 p.m.
Searing Allies Squad
 RPG ZONE
 (MatISA 36444)
 8 p.m. *Continued*
RAF Squad
 BACKGAMMON DEN
 (RAFrazor 71153)

Religious & Spiritual
 1 p.m.
Pagan and Wiccan
 MYSTIC PORTAL
 (Simone+ 37543)
 5 p.m.
Bible Study & Discussion
 SINGLES DELUX
 (Peace 69872)
 8 p.m.
Metaphysical Conference
 MARRIED LIFE
 (NIGHT 56450)

Noon
Chapel of KIGS
 MYSTIC PORTAL
 (RShotgun 46672)
 6 p.m.
Divination Conference
 MYSTIC PORTAL
 (Salem 102244)



7 p.m.
Psychic/Mystic Conference
 MYSTIC PORTAL
 (Gaydon+ 111067)

7 p.m.
Christian Conference
 SINGLES DELUX
 (DonRicc 12419)

KIDS!
 Need a little help with your homework? Our homework hotline is now available **FOUR DAYS A WEEK**, Mon. - Thurs., from 4-6 p.m. Pacific time at INN University.

Role-Playing Games
Continued on page 8
 OPEN
Red Dragon Inn
 GO MAGES
Magic: The Gathering
 RPG ZONE
Lorien
 GO SIERRA2
 9 a.m.
3FL Fantasy Draft
 TOURNAMENT ROOM
 (Fetters 16178)
 Noon
Dangerous Journeys
 EUCHRE/HELLS
 (Traveller+101529)
 1 p.m.
Magnamund
 TEEN SCENE
 (Macros 129054)
Shadowrun
 SPORTS DEN
 (Fiberman 86401)
 3 p.m.
Circle of the Dagger
 SINGLES DELUX
 (MikeH 107272)
Toon
 SPADES TOO
 (DanTheCool 73253)
 5 p.m.
Illuminati
 BACKGAMMON DEN
 (Gogon 19368)
Wild Cards
 HEARTS CLUB
 (Driz2+ 99338)
Bass Player's Club
 TEEN SCENE
 (Bosman 37315)
War of the Lance
 RPG ZONE
 (GregDM 52609)
The Gathering
 MARRIED LIFE
 (Ligh+ 39148)
The Forge
 MYSTIC PORTAL
 (Nemesia+ 13961)
KOY: Roleplay Inn
 CHESS CLUB
 (Book 64650)
 6 p.m.
THE REALMS
 SPADES PLACE
 (Navic 81120)
 7 p.m.
Johns Tavern
 TEEN HANGOUT
 (Johnnatafk+ 45469)
Star Trek Enterprise
 BACKGAMMON DEN
 (Kevin 138331)
TDRP
 SPADES PLACE
 (Stormer+ 71389)

OPEN
Red Dragon Inn
 RPG ZONE
Magic: The Gathering
 RPG ZONE
Lorien
 GO SIERRA2
 4 p.m.
Me and My Dragon
 SINGLES DELUX
 (Calamar 58925)
 5 p.m.
New York 2192
 SPADES PLACE
 (MJ 41955)
INN Star Trek
 SPADES TOO
 (AdmCcaux 94720)
 6 p.m.
Rainier's Scapire
 GO SIERRA2
 (ByronDM+ 40311)
 7 p.m.
RPQG
 RPG ZONE
 (BlueBerry+ 65048)
USS Galaxy
 RPG ZONE
 (CapItell 55010)
AD&D Dark Sun II
 TOURNAMENTS
World of Terath
 EUCHRE II
 (Byron 40311)

OPEN
Red Dragon Inn
 RPG ZONE
Magic: The Gathering
 RPG ZONE
 3 p.m.
Theatre de Vampires
 RPG ZONE
 (Armand+ 72917)
 4 p.m.
Gnar
 SINGLES DELUX
 (DMFuzzbut+ 78277)
 5 p.m.
Star Trek Club
 CARD CLUB
 (Seth 111797)
 6 p.m.
Shield Lands
 GO SIERRA2
 (Mleader 131083)
USS Death
 TOURNAMENTS
 (EgoScorch+ 100323)
USS Renegade
 CARD CRIB
 (RAdmAlkar 80159)
 7 p.m.
Star Trek
 RPG ZONE
 (AdmBBarry 65048)
World of Terath
 SINGLES DELUX
 (KiraDM+ 79917)

OPEN
Red Dragon Inn
 RPG ZONE
Lorien
 GO SIERRA2
 4 p.m.
Ritwar Saga
 MARRIED LIFE
 (Arutha+ 94720)
 5 p.m.
BattleTech
 MARRIED LIFE
 (BlackPlayer)
Dragonstayers Guild
 GO SIERRA2
 (Hades 124437)
Realms of Ayskria
 SPADES TOO
 (AyskriaWM+ 98896)
 5 p.m.
USS Phoenix
 SINGLES DELUX
 (CapGrant 53752)
SOF: RR
 GO SIERRA2
 (Dentry 111781)
Spittle of the Spinx
 SPORTSDEN
 (ByronDM+ 40311)
 7 p.m.
Realms
 RPG ZONE
 (Drouv 69192)

OPEN
Red Dragon Inn
 RPG ZONE
Magic: The Gathering
 RPG ZONE
 6 p.m.
World of Two Moons
 RPG ZONE
 (Cutler+Strongbow+ 49403)
KOY: Misty Hollow
 TOURNAMENTS
 (Siva+ 73524)
GOT: Roleplay Only
 CHESS CLUB
 (Karnie 11806)
OWA Wrestling
 SPADES TOO
 (Jashin 131978)
Amber
 SPORTS DEN
 (Nietsche 139890)
 7 p.m.
Marvel™
 RPG ZONE
 (Illian 110447)

OPEN
Red Dragon Inn
 RPG ZONE
Magic: The Gathering
 RPG ZONE
 7 a.m.
Wanderers of the Realm
 CARD CLUB
 (Venture 59399)
Castle of Cool
 RPG ZONE
 (Spook 49915)
 5 p.m.
DSS
 MYSTIC PORTAL
 (Sythe 90757)
Hell Spawn
 TECH TOWER
 (MSDusy+ 123071)
AD&D: The Shattered Lands
 CHESS CLUB
 (Nietsche 139890)
 6 p.m.
Realms Challenge
 SPADES TOO
 (Shaman 106293)

OPEN
Red Dragon Inn
 RPG ZONE
Magic: The Gathering
 RPG ZONE
 7 a.m.
Time Warriors
 TEEN SCENE
 (ALWZIT 102285)
 8 a.m.
Time Warriors
 SPADES TOO
 (ALWZIT 102285)
 10 a.m.
Kevoland Campaign
 CARD CLUB
 (TheDM 76129)
 1 p.m.
DragonLance
 CARD CLUB
 (SauronDM+ 34961)
 3 p.m.
NBA
 TEEN SCENE
 (gryBEAVS 131672)
Superheroes
 TEEN HANGOUT
 (Eclipse 68048)
Shadowrun
 RPG ZONE
 (TheAtoic 32515)
Kombat
 BACKGAMMON DEN
 (Golbez 134128)
 5 p.m.
Dark Sun
 HEARTS CLUB
 (Feron 109132)
Death Caverns
 EUCHRE II
 (Death 132112)
Amber
 TECH TOWER
 (Chem 95305)
Guardians of Freedom
 SPORTS DEN
 (Freedom 55284)
 6 p.m.
AD&D Planescape
 BACKGAMMON DEN
 (FVMSomne+89312)
 9 p.m.
USS Endocrine
 SPADES PLACE
 (CROW 96406)
 7 p.m.
Red Dwarf
 MYSTIC PORTAL
 (Anthon 6692)
Star Trek
 MYSTIC PORTAL
 (CaplTommy 102263)

Once you find a conference you're interested in, find out where it is by the bold type (for example, **MYSTIC PORTAL**, **SPADES PLACE**). These are waiting rooms in the **Clubhouse**. Once in the waiting room, click the **Go to** button, select **A Conference**, and then click on the conference name desired - you'll join immediately. And remember, you can always start your own conference! Just drop a line to box **931**. It's that easy!

This October schedule is subject to change. The most accurate, up-to-date schedule can always be found online in **Town Hall** under **Conference Schedule**. All times listed are Pacific time. All conferences listed in *blue italics* are private and require approval from the conference's host (displayed in parentheses with their mailbox number) to attend.

Member-hosted conferences and any comments, suggestions or advice given therein do not necessarily reflect the opinions of The ImagiNation Network, Inc.

SUNDAY MONDAY TUESDAY WEDNESDAY THURSDAY FRIDAY SATURDAY

Role-Playing Games

8 p.m. **Seattle Supers**
MARRIED LIFE
(Doomsayer 5272)

Continued from page 7

!!!HELP!!!

New to ImagiNation?

Saturdays and Sundays from 10 a.m. to 5 p.m. Pacific time, get the information you need to navigate the world of ImagiNation.

These special classes for new members start at the top of each hour in the **HELP ROOM**.

7 p.m. *Continued*
Forgotten Realms
TECH TOWER
(TomD/Ming 102263)

8 p.m. **Star Wars**
SPADES TOO
(Stormer 71389)

RIFTS
TOURNAMENTS
(GMLoki+ 101288)

Final Fantasy II
GO SIERRA 2
(Kain 23670)

Special Interests

1 p.m. **Hail Dome Bug Squad**
TECH TOWER
(Catie 35390)

5 p.m. **The Gathering**
MARRIED LIFE
(Luphe+ 39148)

ACAD Users
EUCHREVILLE
(ACE 143619)

7 p.m. **James Brown Hot Tub**
EUCHREVILLE
(JimR 1011)

The Dining Room Table
TOURNAMENT ROOM
(AryC 23489)

Walking with God
SPORTS DEN
(Blair 62922)

9 p.m. **Caveat Emptor**
TOURNAMENT ROOM
(MrBoddy 23637)

6 p.m. **Virtual Pen Society**
CARD CLUB
(Casioipa 71802)

6 p.m. *Continued*
Ask The Doctor
TOURNAMENTS
(LadyDoc 30037)

7 p.m. **Raleigh Kids**
TEEN SCENE
(Zack 47973)

The Disney Club
CARD CLUB
(RJ+ 519)

6 p.m. **Food Fun and Recipe Club**
HEARTS CLUB
(Princess+ 84036)

7 p.m. **Old Times Reunion**
GO MAGES DEN
(3rd Tuesdays only)
(KathyJ 132614)

News Events
MARRIED LIFE

The Movie Club
SINGLES CLUB
(JeremyM 14114)

9 p.m. **Northwest Singles**
SINGLES CLUB
(WThaomi 67992)

10 p.m. **Aquarium Club**
CARD CLUB
(ChuckH 76648)

5 p.m. **Great Ones**
SINGLES DELUX
(Scanless 102708)

6 p.m. **OFFP**
CARD CLUB
(Danny 72523)

7 p.m. **Angel's Party**
TEEN HANGOUT
(Angel 129404)

Vigilantes
SINGLES DELUX
(Marta+ 45578)

Cyberspace Ethics
EUCHRE II
(WThaomi 63351)

FF2
EUCHRE II
(Doom 79024)

Coalition
MARRIED LIFE
(Centauri 33907)

Rebel/ Freedom Fighters
EUCHRE II
(Pep+ 110470)

8 p.m. **Texas Zoo Gang**
SPADES TOO
(Lissa+ 39492)

Lern
RPG ZONE
(Ric 62912)

Pelican Club
SPADES TOO
(JohnCarney 68131)

5 p.m. **Horse Lovers**
CARD CLUB
(Susan 82044)

PQ4 SIG
MYSTIC PORTAL
(PQ4Dan 115590)

Trek Talk
MYSTIC PORTAL
(Picard159 133219)

6 p.m. **Midkemia Legends**
BACKGAMMON DEN
(JimTheHand 71625)

7 p.m. **Disneyana**
CARD CLUB
(Mufesa 114327)

YFP
TEEN SCENE
(Inflamous 72081)

Hawkeye's Bar & Grill
CARD CLUB
(Hawkeye 63543)

YFF
TECH TOWER
(Cassy 30807)

Beads
MARRIED LIFE
(RayC 42585)

9 p.m. **Pelican Club**
SPADES TOO
(JohnCarney 68131)

5 p.m. **Bodyism**
BACKGAMMON DEN
(JohnM 93284)

5 p.m. *Continued*
Two Ears Club
TEEN HANGOUT
(Marcie 60887)

6 p.m. **Teen Advice Club**
TEEN SCENE
(Nathan 136163)

Piers Anthony Club
TEEN HANGOUT
(PafMMe 110822)

7 p.m. **Teen Talk**
TEEN SCENE
(KatieK 133621)

Overeaters Anonymous
CHESS CLUB
(Della+ 32155)

8 p.m. **Nasti Boyz**
SPORTS DEN
(NastiNB 91802)

WFCF
TECH TOWER
(RickyWFCF 64542)

9 p.m. **GH Chat Room**
TEEN HANGOUT
(ghLISlorm 48501)

Pelican Club
SPADES TOO
(JohnCarney 68131)

Poetry Workshop
EUCHREVILLE
(H+H9000+ 17065)

10 p.m. **SNL Fan Club**
HELP ROOM
(1st & 3rd Fridays only)
(HotSalsa 108895)

11 a.m. **Le Ciel Français**
HEARTS CLUB
(Heartsy 50335)

4 p.m. **STAWTLICB**
TEEN HANGOUT
(Mikel 129261)

People With 2 Ears Club
TEEN HANGOUT
(Kathy 124257)

Guitar Club
EUCHREVILLE
(John Lennon 33101)

5 p.m. **The Earth's Problems**
(Humanity 44385)

7 p.m. **Joke Etc.**
TEEN SCENE
(BDG 47325)

CC Social Group
TOURNAMENTS
(1st & 3rd Saturdays only)
(MarinaG 49336)

The Christian Gift
SINGLES SPOT
(GlenShadow 99021)

9 p.m. **WVOST**
SPADES PLACE
(TheWester 5882)

Anime Roundtable
HELP ROOM
(2nd & 4th Saturdays only)
(Ranna 46231)

Road Kill Kale
TOURNAMENTS
(DeadPool 61016)

Another Big Step

Look for The ImagiNation Network on new computers by Compaq. ImagiNation will be pre-loaded on all new Presario Multimedia PCs by Compaq. For more information, visit your nearest computer retailer or call Compaq at (800) 345-1518.

Sports

7 p.m. **Sports Events**
SPORTS DEN

7 p.m. **GYM: Fitness for All**
SPORTS DEN
(ECO 102506)

8 p.m. **Puck Lovers Paradise**
SPORTS DEN
(LJZ 70943)

7 p.m. **Sports Score**
TEEN SCENE
(JohnOwens 105791)

NBA Jam Conference
SPORTS DEN
(AgentSlave 119977)

Noon **Sports Events**
SPORTS DEN

7 p.m. **Sports Events**
SPORTS DEN

Support Groups

6 p.m. **12 Step Recovery**
MARRIED LIFE
(Wisteria+ 46608)

7 p.m. **Victims No More**
TOURNAMENTS
(StarChild+ 35377)

7 p.m. **Desert Hearts Club**
TECH TOWER
(Nina/MARpot+ 80101)

8 p.m. **TV News**
EUCHRE II
(Cindy 71050)

7 p.m. **Soap Talk**
EUCHREVILLE
(Joanne 79041)

New TV Shows
TEEN HANGOUT

5 p.m. **Letterman Asylum**
TEEN HANGOUT
(Ann 90644)

TV & Movies
MYSTIC PORTAL
(Picard159 133219)

10 p.m. **Three Stooges Info Line**
CARD CLUB
(SteveG 80339)

5 p.m. **Liquid TV Club**
TEEN HANGOUT
(JustinK 117861)

Star Trek Remembrance
RPG ZONE
(AndrewW 115511)

10 p.m. **SNL Fan Club**
HELP ROOM
(1st & 3rd Fridays only)
(HotSalsa 108895)

Television & Movies

7 p.m. **Pythonites Anonymous**
MARRIED LIFE
(Owerty 31664)

New Movie Talk
HEARTS CLUB

6 p.m. **Star Wars Reunion**
MARRIED LIFE
(Kalecity 76841)

7 p.m. **The Movie Club**
SINGLES CLUB
(JeremyM 14114)

5 p.m. **M*A*S*H**
MARRIED LIFE
(Hawkeye 100334)

7 p.m. **Soap Talk**
EUCHREVILLE
(Joanne 79041)

New TV Shows
TEEN HANGOUT

5 p.m. **Letterman Asylum**
TEEN HANGOUT
(Ann 90644)

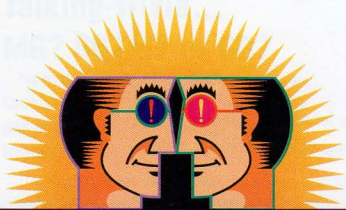
TV & Movies
MYSTIC PORTAL
(Picard159 133219)

10 p.m. **Three Stooges Info Line**
CARD CLUB
(SteveG 80339)

5 p.m. **Liquid TV Club**
TEEN HANGOUT
(JustinK 117861)

Star Trek Remembrance
RPG ZONE
(AndrewW 115511)

10 p.m. **SNL Fan Club**
HELP ROOM
(1st & 3rd Fridays only)
(HotSalsa 108895)



WINNER'S CIRCLE

The Lion King Contest Winners

Animation Category:

ANDY

MARIELLEN

DUCKY

Drawings Category:

DCNLALA

AKKI

OTTER

Thanksgiving Trivia Contest

JEAN

GUIDO

Top NTN Trivia Winners

In the month of November:

DUG

JEAN

BEAST

Remember, you can't take the top prize every month! This month's winners are not eligible for the top prize next month so that everyone gets a fair chance!

Contests void where prohibited by law. Employees of The ImagiNation Network are ineligible.

Cyberspace Showoffs!

Strut your stuff at the end of January in the *NetGuide* Cyberspace Trivia Weekend on NTN Trivia.

The online experts at *NetGuide* magazine have been working overtime collecting trivia all about cyberspace. The result is an exhaustive list of questions that may stump even the most devoted of computing trivia maniacs.

Join in the fun for a trivia weekend January 27, 28 and 29 from 7-7:30 p.m. More details will be posted in the Help Room of the Clubhouse. As always, the top winners will be rewarded handsomely – with cool prizes from *NetGuide*.

Even if you don't win the contest, you can get a free three-month subscription to *NetGuide* magazine. Call (800) 829-0421 for details.

**January 27, 28 and 29
from 7-7:30 p.m.
More details in the Help Room.**

Tips on Buying Your First Multimedia PC

by Mark Vena, Compaq Computer Corporation

Thinking about taking the plunge and buying a new multimedia PC? Use these guidelines to find the right computer for you:

What type of multimedia features should I look for?

A good multimedia PC has a "double speed" CD-ROM drive, sound capability and speakers. Other innovative features include: built-in "telephony" or "speakerphone" capability, to turn your PC into a sophisticated telephone answering machine or give you the ability to have natural-sounding, two-way conversations with other people while working on the PC. Plus, some models allow you to watch television in a scalable window while you're working.

Mark Vena invites ImagiNation members interested in learning about Compaq's Presario line of multimedia PCs to call (800) 345-1518 for more information.

Are multimedia personal computers easy to use?

Yes, if you make the right choice. Your new multimedia PC should be one that is easy to set up and use right out of the box. Some computers, for example, have a library of software already installed on the disk drive. That means you can be up and running just a few moments after turning the computer on for the first time.

Where can I get more information?

Ask questions and learn which is the right multimedia PC by taking a "test drive" in your local computer store then ask questions and do some research on the ones you like best.

Blast off!

Don't forget the Free-For-All Red Baron competition sponsored by *Blaster* magazine. You can play during the entire month of January. The top winners get cool prizes from *Blaster* magazine.

Look for the specifics in the "INN Tournaments" posting of the Pilots Lounge bulletin board and the "INN Special Events" bulletin board in the Help Room.



Good, Clean Fun: Some Changes in CasinoLand

The only place in ImagiNation reserved solely for adults, CasinoLand has developed a reputation over the years as a high-spirited hangout for flirts and gamblers.

On January 1, community standards will be upheld in CasinoLand as they are elsewhere in ImagiNation.

That means:

- Member names and bios can be witty and flirtatious, but not explicitly sexual or vulgar.
- Suggestive conversations must be by mutual consent only. Consequently, broadcasting obscene or vulgar messages in CasinoLand is not allowed under any circumstance.
- CasinoLand will remain an adults-only area. No one under the age of 18 is allowed.

STICKY SITUATIONS

If someone sends you a message in CasinoLand that makes you uncomfortable, you have several options. You can:

- Be polite but firm. Say "Sorry, I'm not interested."
- Press the MUTE button to block further messages from that person.
- Press the COMPLAIN button if you feel community standards are being violated. This records the message from the sender and forwards it to ImagiNation for further action.
- Ask for help from an ImagiNation Network staffer. (You'll recognize staffers by the INN prefix to their names.) Remember that there's usually a staffer on duty in the INN Help Room of the Clubhouse.

CasinoLand is cleaning up its act starting January 1!

Members who don't abide by community standards may be warned or disallowed if the offenses are repeated.

If you're not sure whether a name or bio you've chosen is appropriate, feel free to talk with an online ImagiNation staff member about it. (You'll recognize staffers by the INN prefix to their names.)

Differences of opinion may occur. If this happens, keep your cool, stop using the questionable name or bio for that session and make your appeal to E-Mail Box 970. In most cases, you'll get a response within 24 hours.

WHO IS THERE?



In the Arena, the first choice you make is whether to be a grown-up



or a kid.

Next, pick out what to wear...

*Try on a different
look with the new
facemakers in
Version 2.4's Arena
and CyberPlex in the
Little Red Funhouse.*

■
*Look for
CyberPlex facemaker
possibilities next
month in Imaginings.*



Suiting up for football?



Or for another sport or activity?



(If you can't decide, we've got many more choices where these came from!)

Talking Trivia... MG? SGTM? or GG?

"It may seem to new members that we have a language of our own," says JEAN, one of the top trivia players in The ImagiNation Network.

Indeed.

To even the score, JEAN offered recently to translate some of the top abbreviations that the old hands in trivia use to "talk" even quicker online.

Some translations, courtesy of JEAN:

gg = good guess or good game

mg = my guess

wag = was a guess

wid = when in doubt, pick #3

ni = no idea

as = almost sure

iyss = if you say so

sgtm = sounds good to me

poe = process of elimination

rbns = repeat but not sure

ccc = click, click, click

j/k = just kidding

Oh, and one more: **C&JU WAHF!** "I just invented that one myself," JEAN writes. "That one means 'Come & Join Us! We are having fun!'"

Prizes, Prizes and More Prizes

New, Revised NTN Trivia Program:

Play NTN Trivia in The ImagiNation Network and you just might walk away with one of our top prizes. The Grand Prize winner at the end of the year gets a multimedia workstation with a retail value of \$2,500!

Each month, we tally the scores of members who have played NTN Trivia and give away free hours online, to be spent however you like in The ImagiNation Network.

Here's the plan:

FIRST PLACE

15 free hours online

SECOND PLACE

10 free hours online

THIRD PLACE

5 free hours online

FOURTH - TENTH PLACE

1 free hour online

How to Play NTN Trivia

- Check for upcoming contest times and places on the NTN Trivia bulletin board in the Trivia Haven room of the Clubhouse.
- To get there, go to the Clubhouse, then to the room called Trivia Haven. Press the GOTO button and then select Bulletin Board. You'll see a listing of several bulletin boards. Choose NTN Trivia Info.

And even if you don't take one of the top spots in The ImagiNation Network's Winner's Circle, playing NTN Trivia in ImagiNation gives you entry into NTN's nationwide competition that includes players outside of The ImagiNation Network. That means you'll rack up points that can later be traded in for items in NTN Trivia's Player's Plus catalog.

Sign Up Now For INN University

Classes will soon be filling up for the new session at INN University. The courses listed here include some, with Box numbers, that require preregistration, and some, listed here without Box numbers, that are open to anyone who wants to drop in. If you want to attend a class that requires preregistration, you must write to the Box number listed by January 13th. Classes start on January 16th and are held in the INN University room of the Clubhouse.

Monday

6 p.m.
OS2
Box 704
Euchre
Drop In

VISUALBASIC
Box 764
6:30 p.m.
Hearts
Box 764
7:30 p.m.
Parenting
Box 767
Word for Windows
Box 772

Tuesday

6 p.m.
RPG
Box 781
Math Workshop
Drop In

6:30 p.m.
Cooking for 2 w/Style
Box 793
Go
Drop In

7:30 p.m.
Internet
Box 727
Game Review
Drop In

Wednesday

6 p.m.
Quicken
Box 735
Backgammon
Drop In

6:30 p.m.
Paradox for Windows
Box 722
Spades
Drop In

7:30 p.m.
Excel
Box 754
Recipe Exchange
Drop In
Chess
Drop In

Thursday

6 p.m.
Beginning ASM
Box 764
Math Workshop
Drop In

6:30 p.m.
Workshop for the Mind
Box 745
Windows Applications
Box 715

7:30 p.m.
DBasic
Box 726
Genealogy
Box 767

8 p.m.
Red Baron
Drop In

8:30 p.m.
Cribbage
Drop In

Friday

6 p.m.
Home Budgeting
Box 704
Starting a BBS
Box 708

7 p.m.
CasinoLand
Drop In

Classes
start on
January
16th!

Saturday

10 a.m.
Newcomers Class
Drop In

11 a.m.
Backgammon
Drop In

Noon
Yserbius
Drop In

2 p.m.
Accounting Help
Drop In

3 p.m.
Photography
Box 745

4 p.m.
Euchre
Drop In

5 p.m.
Spades
Drop In

6 p.m.
Upgrading Your PC
Box 726

7 p.m.
3-D Golf
Drop In

Sunday

11 a.m.
Internet
Box 727

1 p.m.
Cribbage
Drop In

Twinion
Drop In

4 p.m.
Movie Review
Drop In

5 p.m.
Red Baron
Drop In
Hearts
Drop In

6 p.m.
CoreIDraw
Box 715
Creating DOOM Wads
Box 734

Burlingame, CA 94010.
or 577 Airport Blvd., Suite 300,
ImagIngs Editor, at E-Mail Box 915

QUESTIONS OR COMMENTS?
Drop a line to Gretchen Lee,
membership, call 1-800-IMAGIN-1,
or ask questions about your
To join The Imagination Network
wholly-owned subsidiary of AT&T.
The Imagination Network is a
online entertainment service.
Network - America's premier
for members of The Imagination
ImagIngs is published monthly

DATED MATERIAL

Burlingame, CA 94010
577 Airport Blvd., Suite 300

IMAGININGS!

IMAGININGS!

12 JANUARY 1995

IMAGINATION!™ **The Last Word**

You've taken us a long way in just four short years. What started out simply as a card and boardgames network for small and specific audiences has become one of the most profound new sources of entertainment available in the 20th century.

We're still connected firmly to our roots - which is games. In 1991, when we began accepting members, you could play one of only six games on the Network. Now we offer dozens of games, from role-playing adventures like *The Shadow of Yserbius™* to the old standbys like *Bridge* and *Chess*. And, look for exciting "3-D" experiences, Internet access, and new role-playing games like *The Ruins of Cawdor™* in the near future.

But more important is what has grown up around the games - a sense of community that transcends the miles. You might be playing against someone younger or older than yourself. As you play you might be chatting with a newcomer to computing or a technophile. But the connection has been made - in the playing of the game.

What does it mean to be a member of The Imagination Network? It means that you are part of a larger community connected via phone lines and it means that you are part of a community of Imagination members who use passion for a game as a springboard into a new kind of experience.

See you in Imagination!

Tom Pomeroy, a.k.a. TomP. *Tom Pomeroy is the Vice President of Marketing and Sales at The Imagination Network.*

Don't Worry

Our computer engineers at The Imagination Network say that the problem that causes the Pentium chip to malfunction will not affect people using Imagination software. Intel's Pentium chip is found in many PCs nationwide.

BULK RATE
US POSTAGE
PAID
PERMIT NO. 15341
Los Angeles, CA